

FOR LEASE

NORTHFIELD PLACE

3080 Northfield Place
Roswell, Georgia 30076



PROPERTY FEATURES:

- Quality Flex Office / Industrial Suites
- 20' Clear Ceiling Heights
- Fire Sprinkler System
- 8' x 10' Dock High and Drive-In Doors
- Tilt Wall Construction
- Located within the Roswell Opportunity Zone, offering significant tax credits to users with qualifying credit
- Located within easy driving distance to excellent dining, retail, and other amenities, including North Point Mall
- Great accessibility to GA-400 (1.5 mile east) and I-285 (10 miles south)
- Located near intersection of Mansell Road and Old Roswell Road



2023 DEMOGRAPHIC FEATURES

1 MILE RADIUS
POPULATION: 7,377
HOUSEHOLDS: 2,970
AVERAGE HOUSEHOLD INCOME: \$120K

3 MILE RADIUS
POPULATION: 72,132
HOUSEHOLDS: 29,729
AVERAGE HOUSEHOLD INCOME: \$156K

5 MILE RADIUS
POPULATION: 183,737
HOUSEHOLDS: 72,453
AVERAGE HOUSEHOLD INCOME: \$172K

FOR LEASING INFO,
CONTACT:

SARAH GRETZMACHER

sgretzmacher@mimms.com | 770.518.2200
www.mimms.com



FOR LEASE

NORTHFIELD PLACE

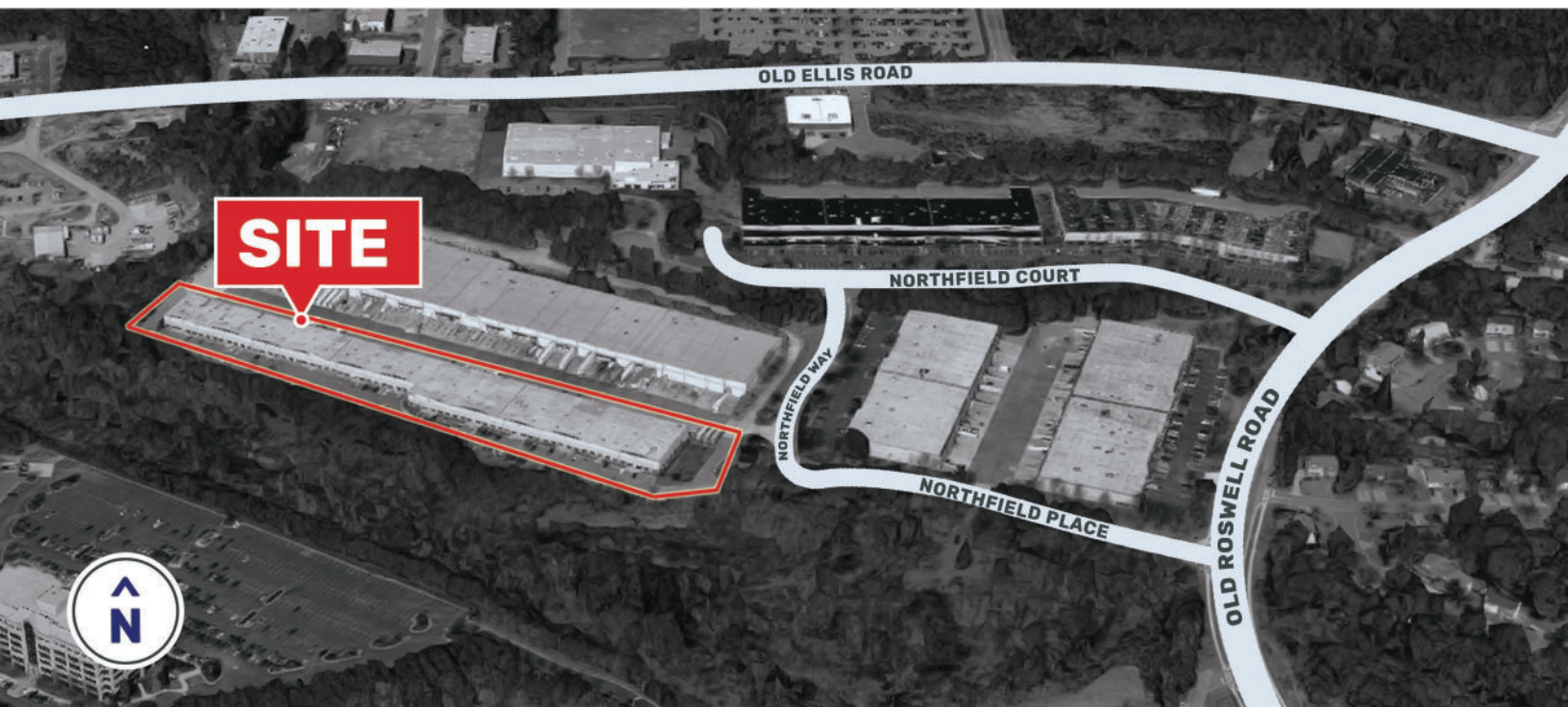
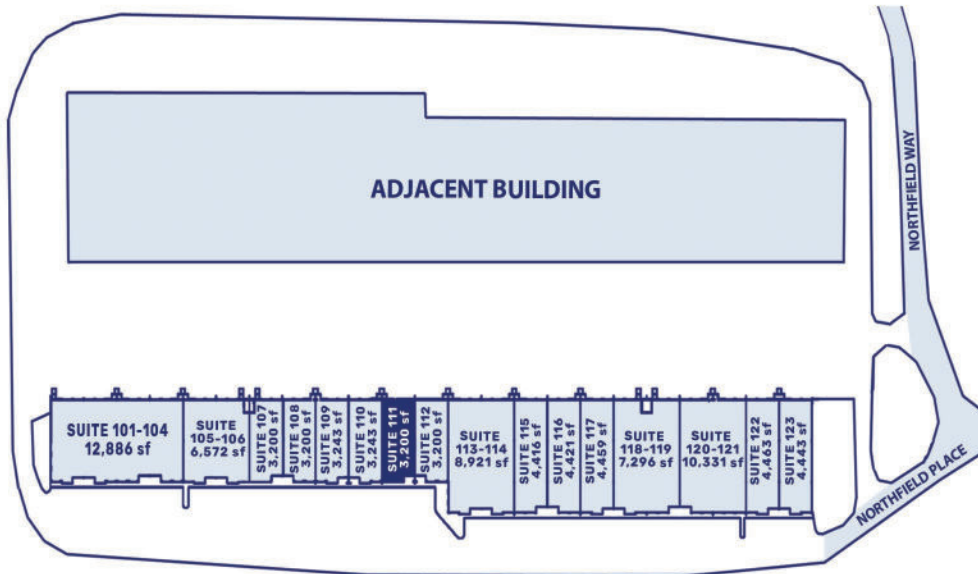
3080 Northfield Place
Roswell, Georgia 30076

AVAILABILITIES

SUITE 111 | 3,200 SF

CURRENT TENANTS

- SUITE 101-104** | Vendege
- SUITE 105-106** | Caren Products
- SUITE 107** | Ecotech Glass Inc.
- SUITE 108** | Blind Tiger Communications
- SUITE 109** | Future Roof & Restoration
- SUITE 110** | Historic Roswell Antiques
- SUITE 112** | The Cabinet Crew
- SUITE 113-114** | Rolling Frito-Lay
- SUITE 115** | H3 Manufacturing
- SUITE 116** | Encore Worldwide
- SUITE 117** | Eco4US
- SUITE 118-119** | American Radio
- SUITE 120-121** | Litefighter Systems
- SUITE 122-1233** | Litefighter Systems



FOR LEASING INFO,
CONTACT:

SARAH GRETZMACHER

sgretzmacher@mimms.com | 770.518.2200
www.mimms.com

