

# FOR LEASE

## NORTHFIELD PLACE

3080 Northfield Place  
Roswell, Georgia 30076



## PROPERTY FEATURES:

- Quality Flex Office / Industrial Suites
- 20' Clear Ceiling Heights
- Fire Sprinkler System
- 8' x 10' Dock High and Drive-In Doors
- Tilt Wall Construction
- Located within the Roswell Opportunity Zone, offering significant tax credits to users with qualifying credit
- Located within easy driving distance to excellent dining, retail, and other amenities, including North Point Mall
- Great accessiibility to GA-400 (1.5 mile east) and I-285 (10 miles south)
- Located near intersection of Mansell Road and Old Roswell Road



## 2025 DEMOGRAPHIC FEATURES

### 1 MILE RADIUS

POPULATION: 7,375

HOUSEHOLDS: 2,963

AVERAGE HOUSEHOLD INCOME: \$128K

### 3 MILE RADIUS

POPULATION: 71,957

HOUSEHOLDS: 29,668

AVERAGE HOUSEHOLD INCOME: \$156K

### 5 MILE RADIUS

POPULATION: 182,453

HOUSEHOLDS: 71,901

AVERAGE HOUSEHOLD INCOME: \$174K

FOR LEASING INFO,  
CONTACT:

**SUZANNE SHANK**

sshank@mimms.com | 770.518.2200  
www.mimms.com

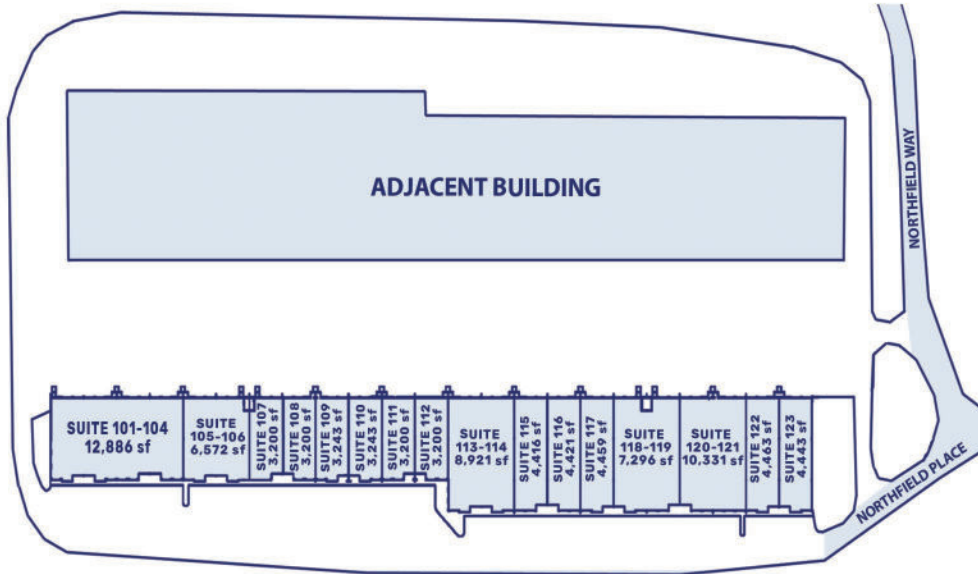




# FOR LEASE

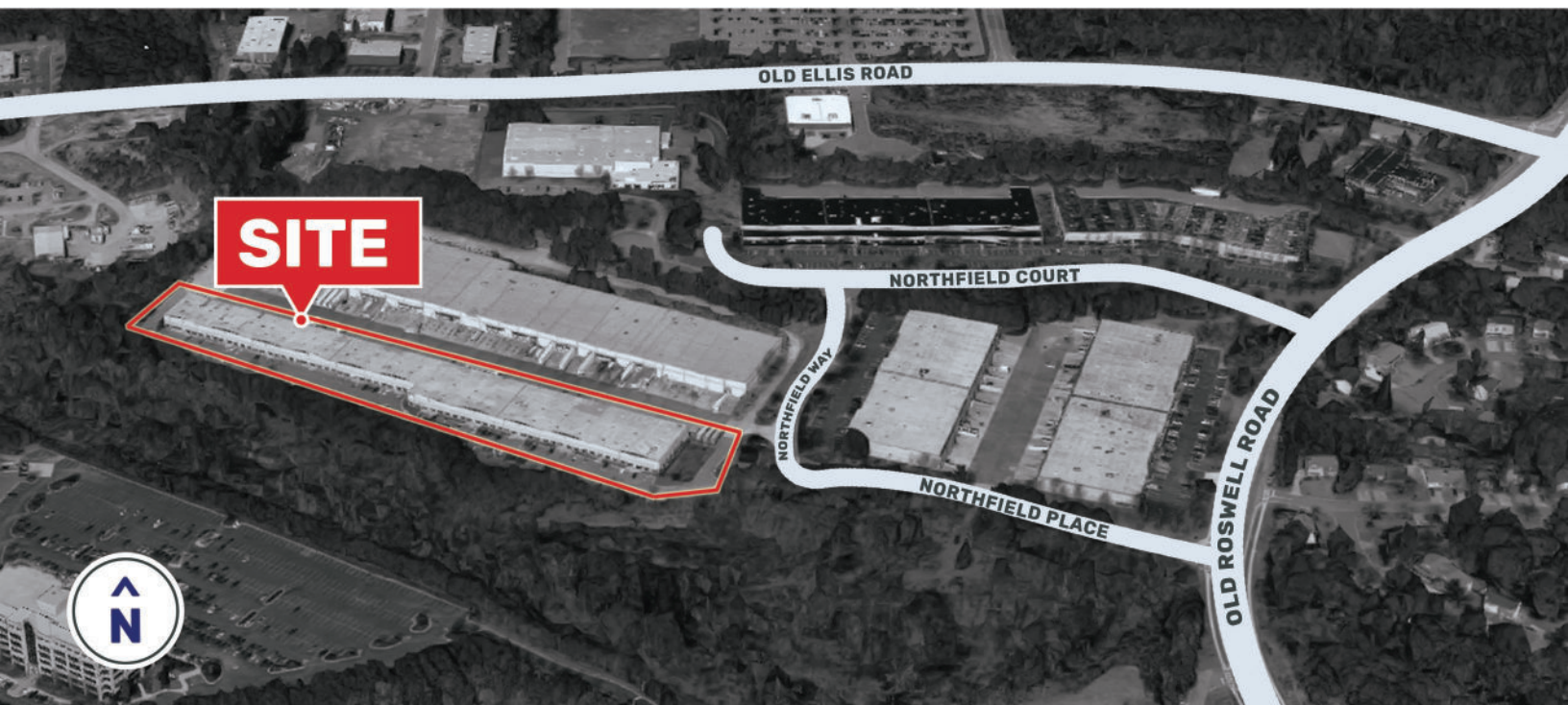
## NORTHFIELD PLACE

3080 Northfield Place  
Roswell, Georgia 30076



## CURRENT TENANTS

- SUITE 101-104** | In Reach
- SUITE 105-106** | Caren Products
- SUITE 107** | Ecotech Glass Inc.
- SUITE 108** | Service Master
- SUITE 109** | Atlanta Home Theater
- SUITE 110** | Historic Roswell Antiques
- SUITE 111** | Ranny Blair Construction
- SUITE 112** | The Cabinet Crew
- SUITE 113-114** | Rolling Frito-Lay
- SUITE 115** | H3 Manufacturing
- SUITE 116** | DaVinci Imports
- SUITE 117** | DaVinci Imports
- SUITE 118-119** | American Radio
- SUITE 120-121** | Litefighter Systems
- SUITE 122-123** | Litefighter Systems



FOR LEASING INFO,  
CONTACT:

**SUZANNE SHANK**

sshank@mimms.com | 770.518.2200  
www.mimms.com

