



MIMMS ENTERPRISES
780 OLD ROSWELL PLACE, SUITE 100
ROSWELL, GA 30076
770-518-2200

SUITE 105 AND 106
2070 PEACHTREE INDUSTRIAL COURT
CHAMBLEE, GEORGIA

FLOOR PLAN

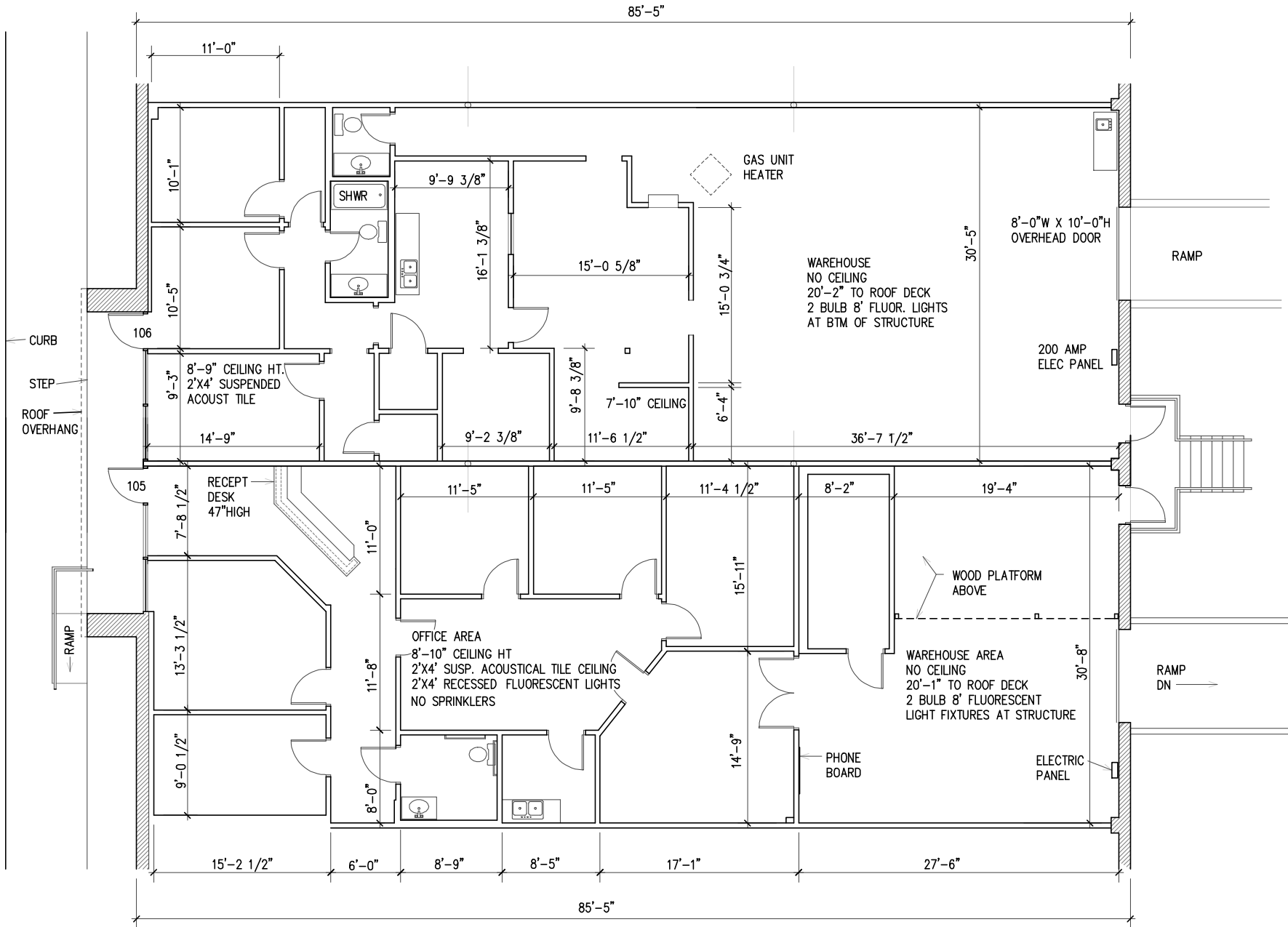
DATE
APRIL 28, 2015

SCALE
AS SHOWN

SHEET

A-1

1 OF SHEETS



FLOOR PLAN

