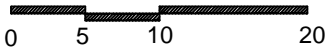
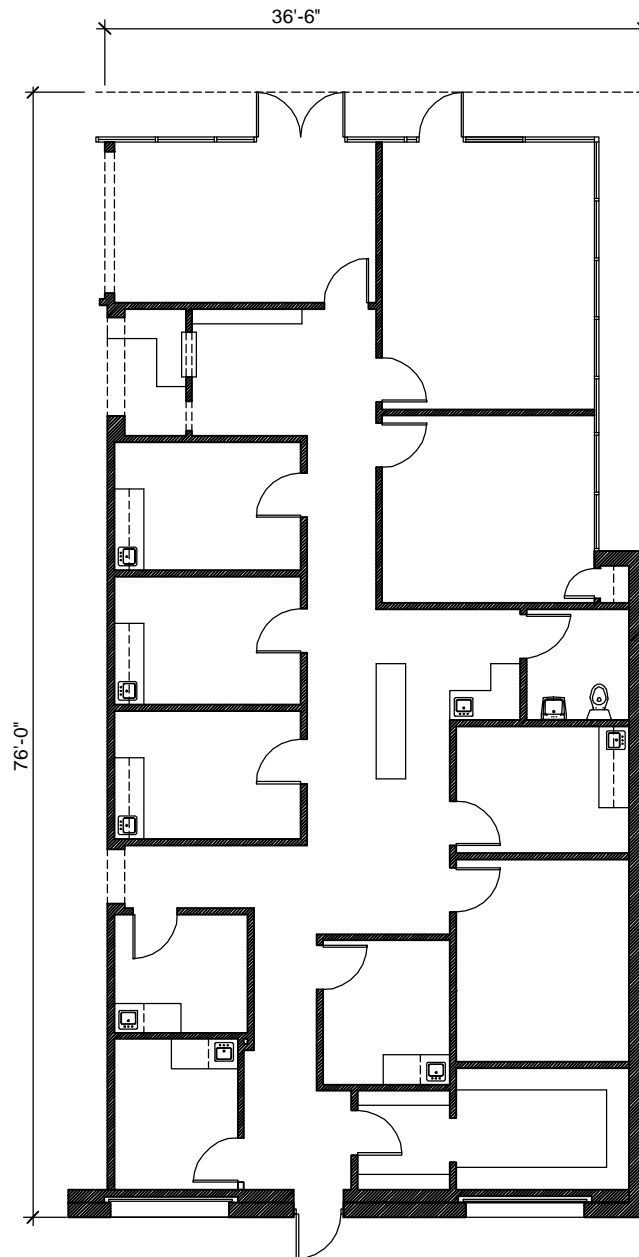


# ROSWELL BUSINESS CENTER

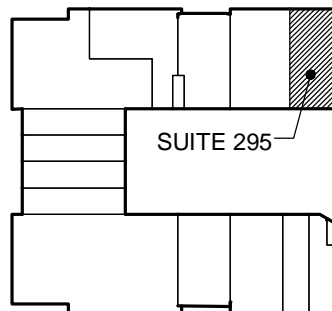
# SUITE 295

11660 ALPHARETTA HIGHWAY  
ROSWELL, GEORGIA 30076

2,736 TOTAL S.F.



KEY PLAN  
BLDG. 200



FOR LEASING INFORMATION  
CONTACT:

MICHAEL BECK



COMMERCIAL REAL ESTATE SERVICES

PHONE: (404) 355-9300  
FAX: (404) 351-6329