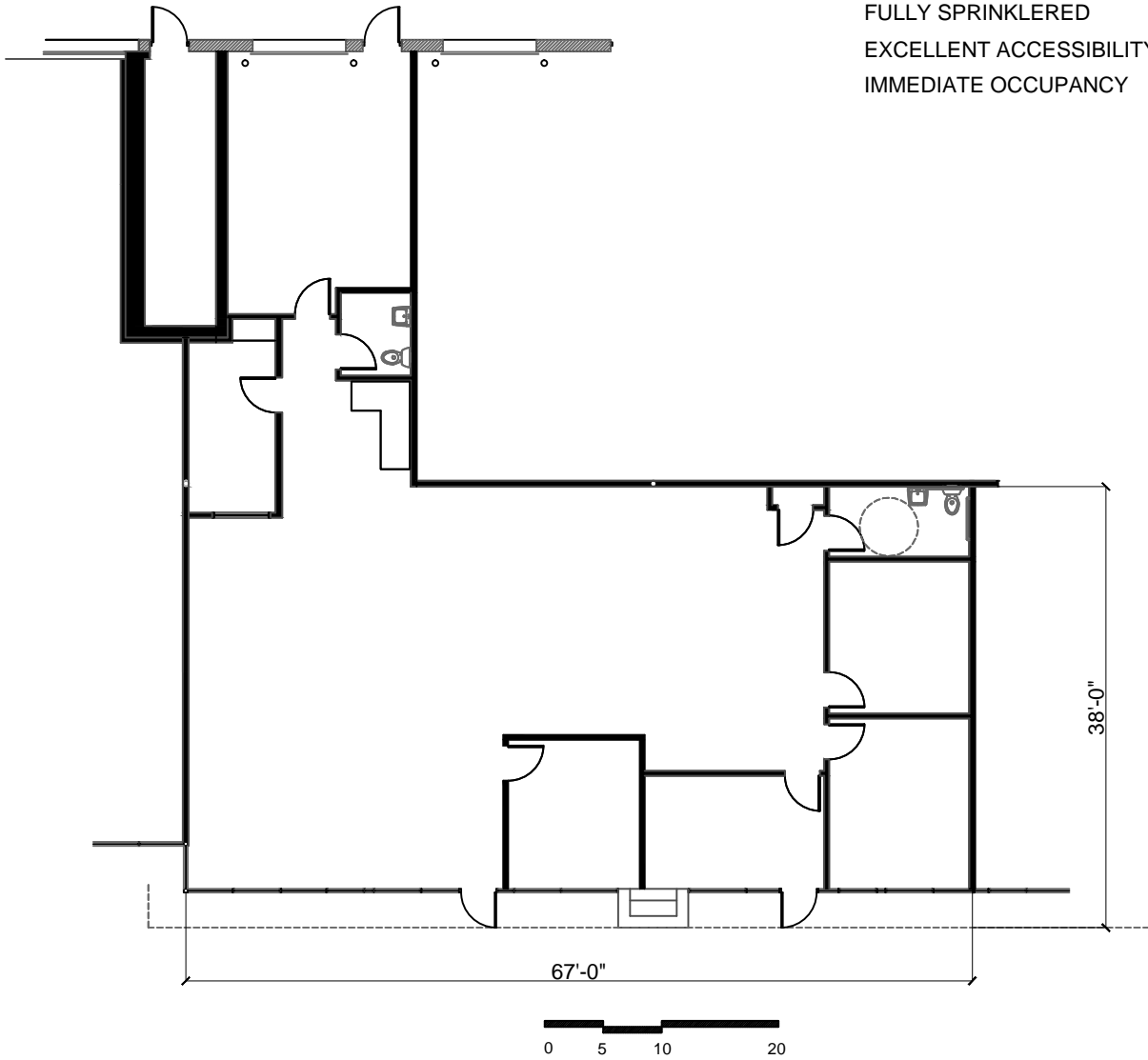


ROSWELL BUSINESS CENTER

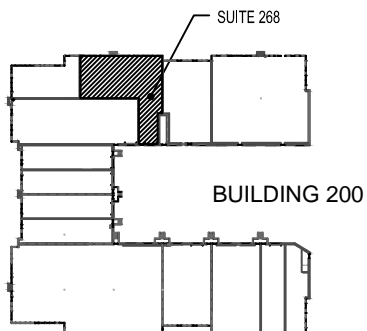
SUITE 268

11660 ALPHARETTA HIGHWAY
ROSWELL, GEORGIA 30076

3,220 TOTAL SQUARE FEET
100% OFFICE SPACE
BEAUTIFULLY LANDSCAPED
FULLY SPRINKLERED
EXCELLENT ACCESSIBILITY
IMMEDIATE OCCUPANCY



KEY PLAN



FOR LEASING INFORMATION CONTACT:
MICHAEL BECK 404-355-9300

