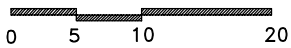
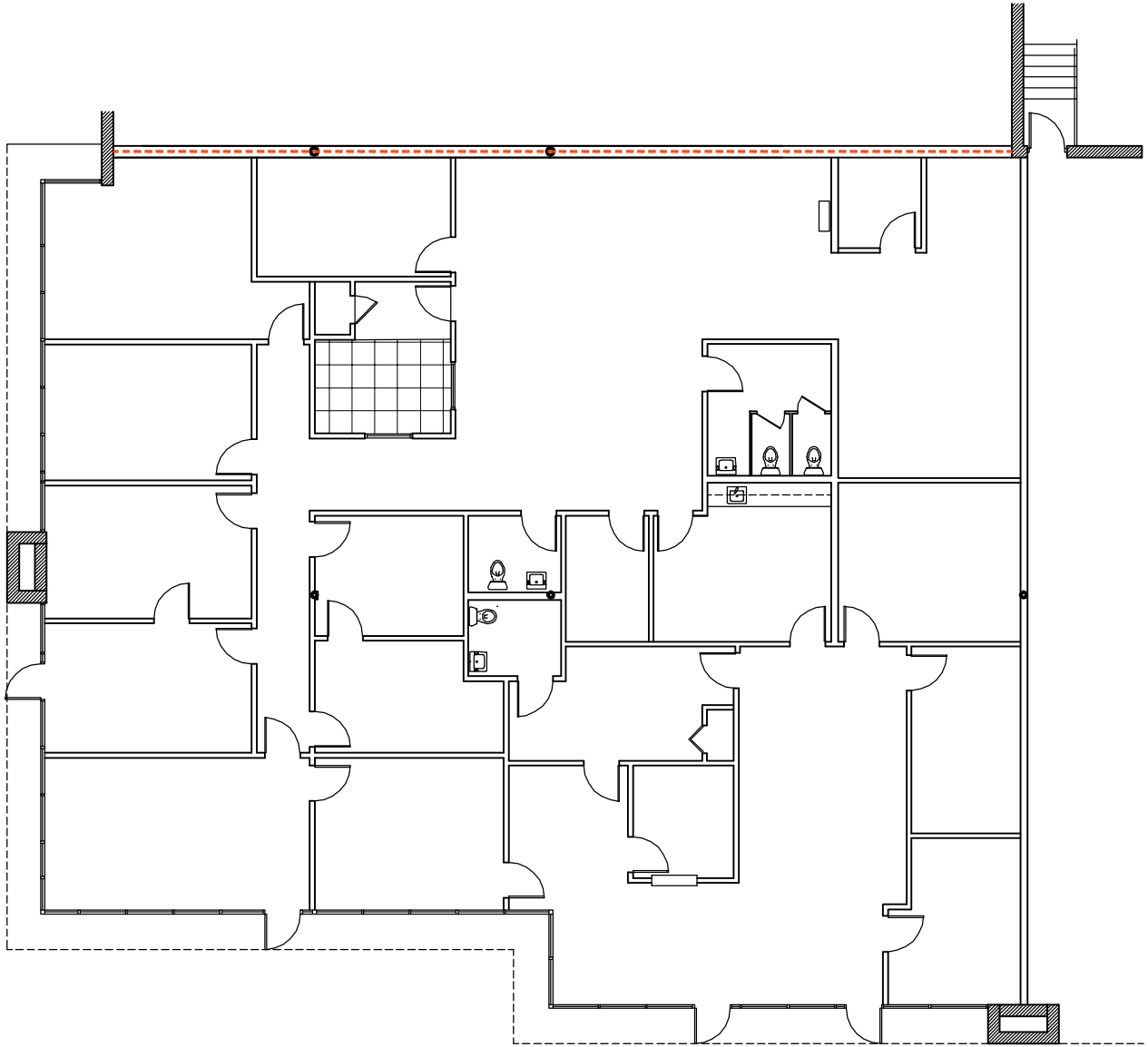


ROSWELL BUSINESS CENTER

SUITE 245

11660 ALPHARETTA HIGHWAY
ROSWELL, GEORGIA 30076

5,688 TOTAL S.F.



<p>KEY PLAN BLDG. 200</p> <p>A key plan diagram showing the layout of Building 200. Suite 245 is highlighted with a hatched pattern and labeled with a line pointing to it.</p>	<p>FOR LEASING INFORMATION CONTACT:</p> <p>MICHAEL BECK</p> <p>HAILEY REALTY COMPANY COMMERCIAL REAL ESTATE SERVICES</p> <p>PHONE: (404) 355-9300 FAX: (404) 351-6329</p>
--	--