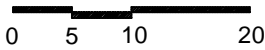
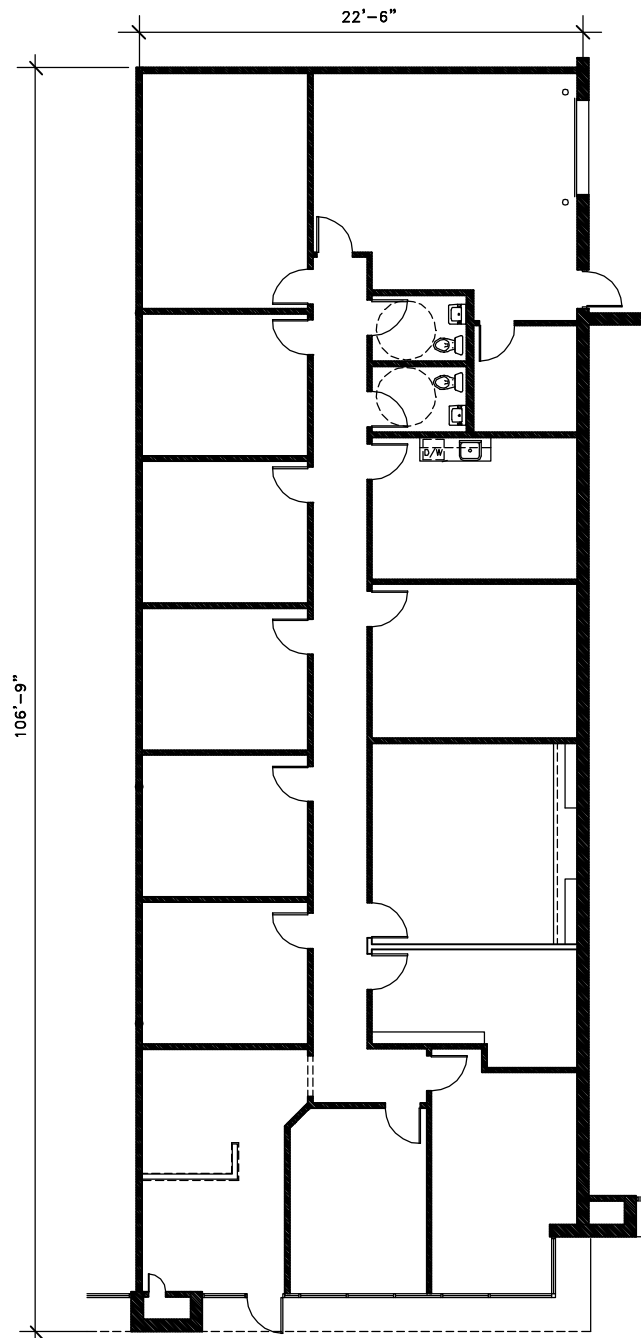


ROSWELL BUSINESS CENTER

SUITE 262

11660 ALPHARETTA HIGHWAY
ROSWELL, GEORGIA 30076

3,268 TOTAL S.F.



<p>KEY PLAN</p> <p>SUITE 262</p> <p>BLDG. 200</p>	<p>FOR LEASING INFORMATION CONTACT:</p> <p>MICHAEL BECK</p> <p>HAILEY REALTY COMPANY</p> <p>COMMERCIAL REAL ESTATE SERVICES</p> <p>PHONE: (404) 355-9300 FAX: (404) 351-6329</p>
---	---