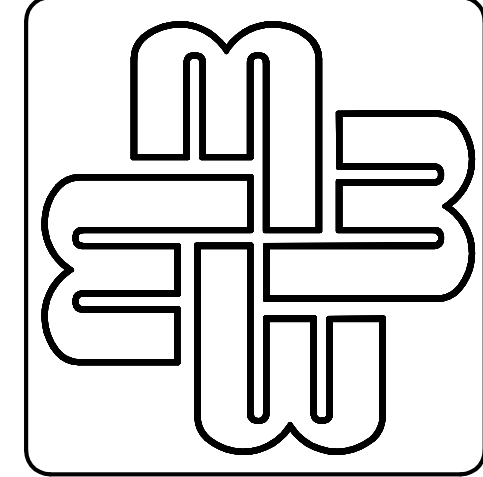


EXISTING FLOORPLAN:  
SCALE: 1/8" = 1'

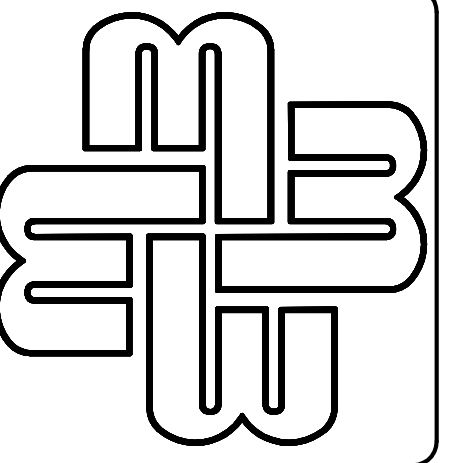


MIMMS ENTERPRISES  
85-A MILL ST.  
ROSWELL, GA  
770-518-1100

PERSONAL TRAIN. INST.  
EXCHANGE AT HAMMOND  
5956 ROSWELL RD.  
SANDY SPRINGS, GA

SPACE PLAN

DRAWN JDS
CHECKED
DATE 4/15/2001
SCALE AS SHOWN
JOB NO. MIMMS3046
SHEET A-1

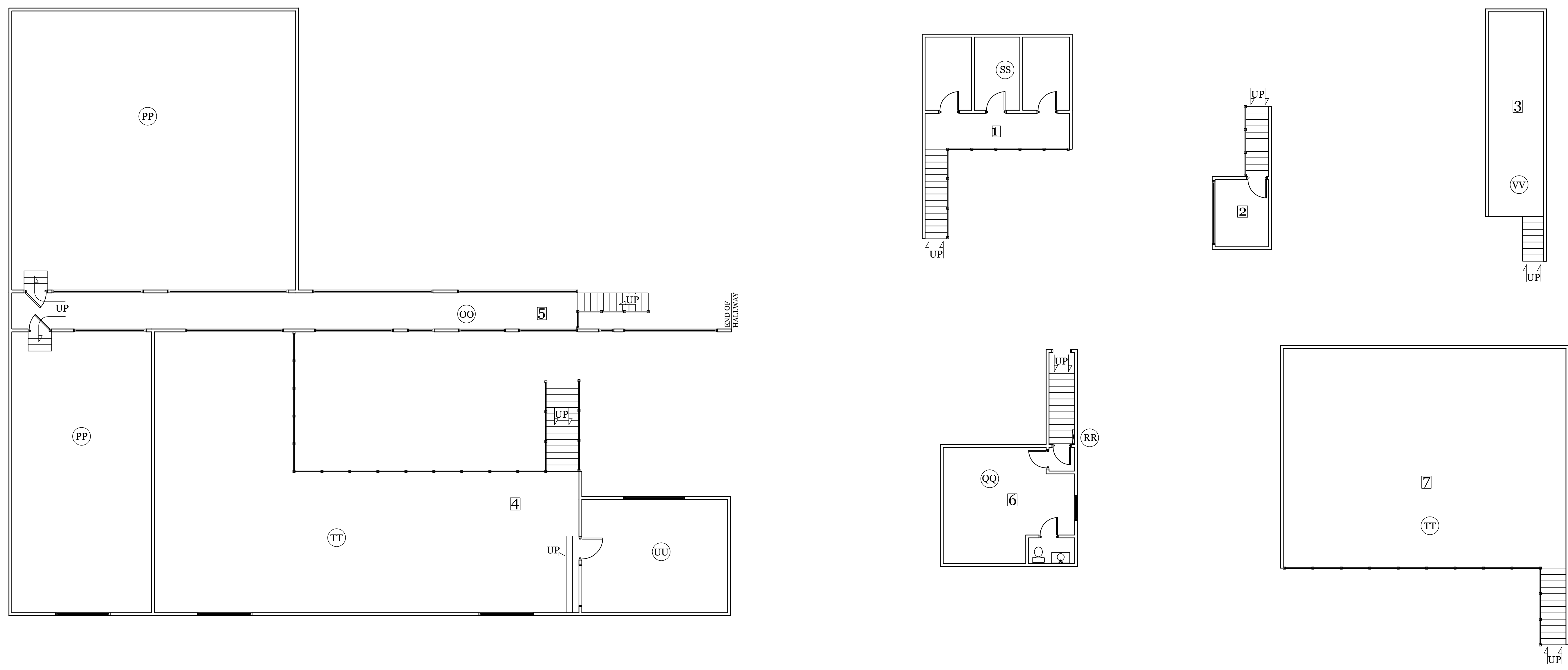


MIMMS ENTERPRISES  
85-A MILL ST.  
ROSWELL, GA  
770-518-1100

PERSONAL TRAIN. INST.  
EXCHANGE AT HAMMOND  
5956 ROSWELL RD.  
SANDY SPRINGS, GA

SPACE PLAN

DRAWN JDS
CHECKED
DATE 4/15/2001
SCALE AS SHOWN
JOB NO. MIMMS3046
SHEET A-2
2 OF SHEETS 2



**GENERAL NOTES:**

- A. 3' LANDING AT SIDEWALK/GRADE LEVEL. 10'-2'X4' DROP CEILING WITH FLUSH MOUNT FLUOR. STRIP LIGHTS
- B. 7' LANDING AT BOTTOM OF HALLWAY. 2'8" DROP IN FLOOR HEIGHT.
- C. FLOOR SLOPE UP TO 8'-2'X4' DROP CEILING.
- D. SEWAGE INJECTOR PUMP FOR COMMUNE
- E. 20' GYP CEILING WITH 2'X2' RECESSED FLUORESCENT FIXTURES
- F. 10' GYP CEILING WITH FLUSH MOUNTED STRIP FLUORESCENT LIGHTING
- G. UNFINISHED TWO STORY STORAGE AREA. 22'6" TO STEEL DECK
- H. 1-600A, 120/208V ELECTRICAL MAIN, 1-150A AND 1 UNRATED 120/208V ELECTRICAL SUBPANELS
- I. HALLWAY - 16'-2'X2' DROP CEILING WITH 2'X4' LAY-IN FLUORESCENT LIGHTING
- J. STORAGE CLOSETS
- K. 4" WOOD SQUARE COLUMNS
- L. 5" ROUND STEEL COLUMNS
- M. 2'0"X4'0" DOOR (OLD RACKETBALL COURT DOORS) NOW SEALED ONE SIDE
- N. 9'8" CEILING UNDER MEZZANINE
- O. 20' - 4'X8' PANEL CEILING WITH 2'X2' RECESSED FLUORESCENT LIGHTING
- P. 5"H X 6' X 12' PLATFORM
- Q. 5" SQUARE WOOD COLUMNS
- R. 9'6" - 2'X4' DROP CEILING WITH FLUSH MOUNT STRIP FLUORESCENT LIGHTING
- S. BASKETBALL GYM - 19' GYP CEILING, TRANSITIONING TO 20' CEILING AS SHOWN
- T. 9'-2'X2' DROP CEILING WITH 2'X4' LAY-IN FLUORESCENT LIGHTING
- U. 8" RISE IN FLOOR HEIGHT IN DRESSING AREA
- V. MECHANICAL ROOM - 3'2" DROP IN FLOOR HEIGHT. MEZZANINE SUPPORTING TWO 50GAL ELECTRIC HOT WATER HEATERS
- W. UNFINISHED STORAGE AREA - 6" STEP UP
- X. 91 GAL. GAS HOT WATER HEATER
- Y. 1-100A AND 3-UNRATED 120/208V ELECTRICAL SUBPANELS, 1-100A/240V ELEC. DISCONNECT, AND 1-75KVA TRANSFORMER
- Z. 5" SQUARE STEEL COLUMN

- AA. 11'1" GYP CEILING WITH RECESSED CAN LIGHTING
- BB. 32" ROUND SUPPORT COLUMN (CORNER OF BUILDING END - VAULT CEILING FROM FACE OF WORKOUT ROOM 16' AWAY TO THIS POINT)
- CC. 3' HIGH KNEEWALL
- DD. GLASS BLOCK CURVED WALL
- EE. 2' HIGH KNEEWALL
- FF. 19'8" GYP CEILING WITH RECESSED FLUORESCENT LIGHTING
- GG. 9'4" GYP CEILING BELOW MEZZANINE
- HH. 4" X 4" STEEL SUPPORT COLUMNS
- II. GAS FURNACE AND 125A, 120/208V ELECTRICAL SUBPANEL
- JJ. CASEWORK (CUSTOMER SERVICE COUNTERS)
- KK. 9'-2'X2' DROP CEILING WITH 2'X4' LAY-IN FLUORESCENT LIGHTING
- LL. 6" WRAPPED BEAM
- MM. OPEN CEILING - 12'5" TO BOTTOM OF STEEL WITH HUNG 2'X8' STRIP FLUORESCENT LIGHTS AND CEILING FANS
- NN. 40 GAL ELECTRIC HOT WATER HEATER
- OO. 7'-2'X2' DROP CEILING WITH 2'X4' LAY-IN FLUORESCENT LIGHTING
- PP. 8' GYP CEILING WITH 2'X2' RECESSED FLUORESCENT LIGHTING
- QQ. 8' - 2'X2' DROP CEILING WITH 2'X4' LAY-IN FLUORESCENT LIGHTING
- RR. STEEL LADDER ACCESS TO ROOF
- SS. 8' GYP WALLS WITH 9'3" - GYP CEILING AND 2'X2' RECESSED FLUORESCENT LIGHTING
- TT. OPEN MEZZANINE
- UU. 8'-2'X4' DROP CEILING WITH LAY-IN FLUORESCENT LIGHTING
- VV. UNFINISHED STORAGE ON SECOND LEVEL

**SECOND FLOOR FLOORPLAN:**  
SCALE: 1/8" = 1'