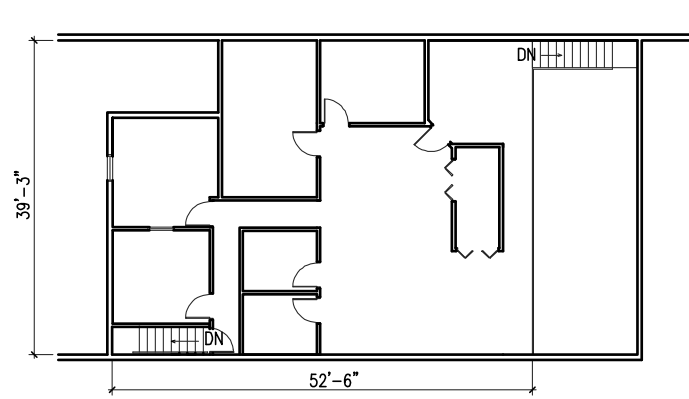
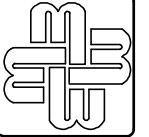


MAIN FLOOR PLAN

0' 4' 8' 12' 16' 20'  
 | | | | |



MEZZANINE



MIMMS ENTERPRISES  
 780 OLD ROSWELL PLACE, SUITE 100  
 ROSWELL, GA 30076  
 770-518-2200

SUITE 210  
 2065 PEACHTREE INDUSTRIAL COURT  
 CHAMBLEE, GEORGIA 30341

FLOOR PLAN

DATE  
 JUNE 8, 2011

SCALE  
 AS SHOWN

SHEET

A-1

1 OF SHEETS